



# Chelsea 200

Lot 306 Reed Way Kilmore 3764 VIC

# \$599,816

4  2  2 

## Chelsea 200 on 545SQ Land (Electric Pack Included )

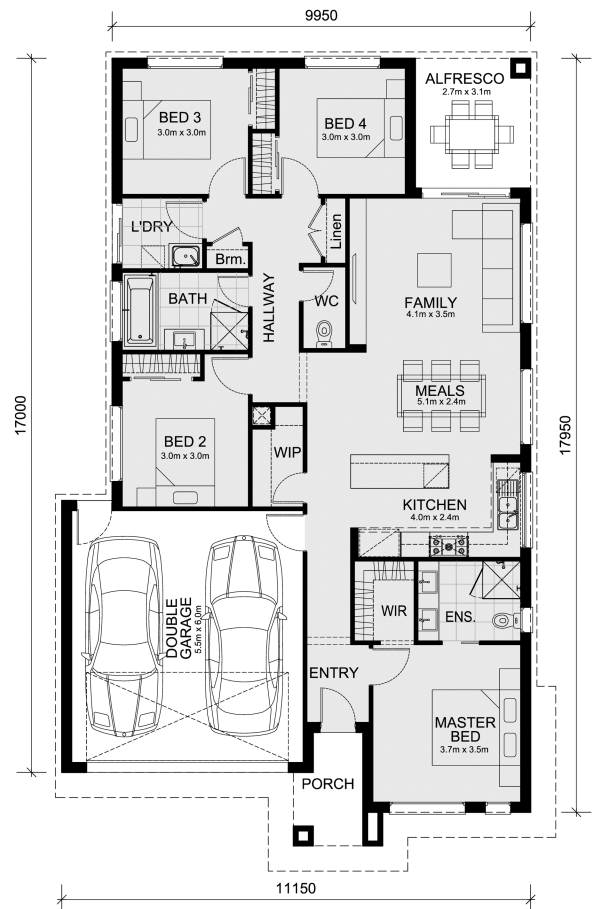
The Chelsea 200 Electric House and Land Package!

\* Mimosa Homes New Added Value Inclusions:

- 50 Year Structural Warranty!
- Inclusive of site costs & connections with H1 class slab as per standard inclusions!
- Quality floor coverings throughout entire home!
- Higher ceilings 2550mm to ground floor!
- Double Glazed Awning windows!
- LED Downlights to entire home!
- Fibre Optic Provision!
- Vitrified Compact Surface benchtop to kitchen, bathroom & ensuite!
- 900mm S/S upright oven and cook top with S/S canopy rangehood!
- Stainless steel Dishwasher and Microwave with trim kit!
- Aircondition with 4 Zones.
- Flexible floor plans with 7 Star energy rating.

CALL BUILDER DIRECT!

All plans and facades are indicative only and may change. Mimosa Homes may amend plans, specifications, and prices without notice. Package prices are based on a standard facade, standard inclusions, and suitable land availability, excluding developer/estate requirements. Facade and inclusion images may show non standard items not included in the price. Dimensions are approximate. Landscaping, fencing, decking, planter boxes, driveways, and paths are excluded unless specified.



### Area Details

Land Size: 545sqm  
Building Size: 184sqm

Contact: Abin Paul  
Phone: 0470 222 815  
abin@mimosahomes.com.au

www.mimosahomes.com.au