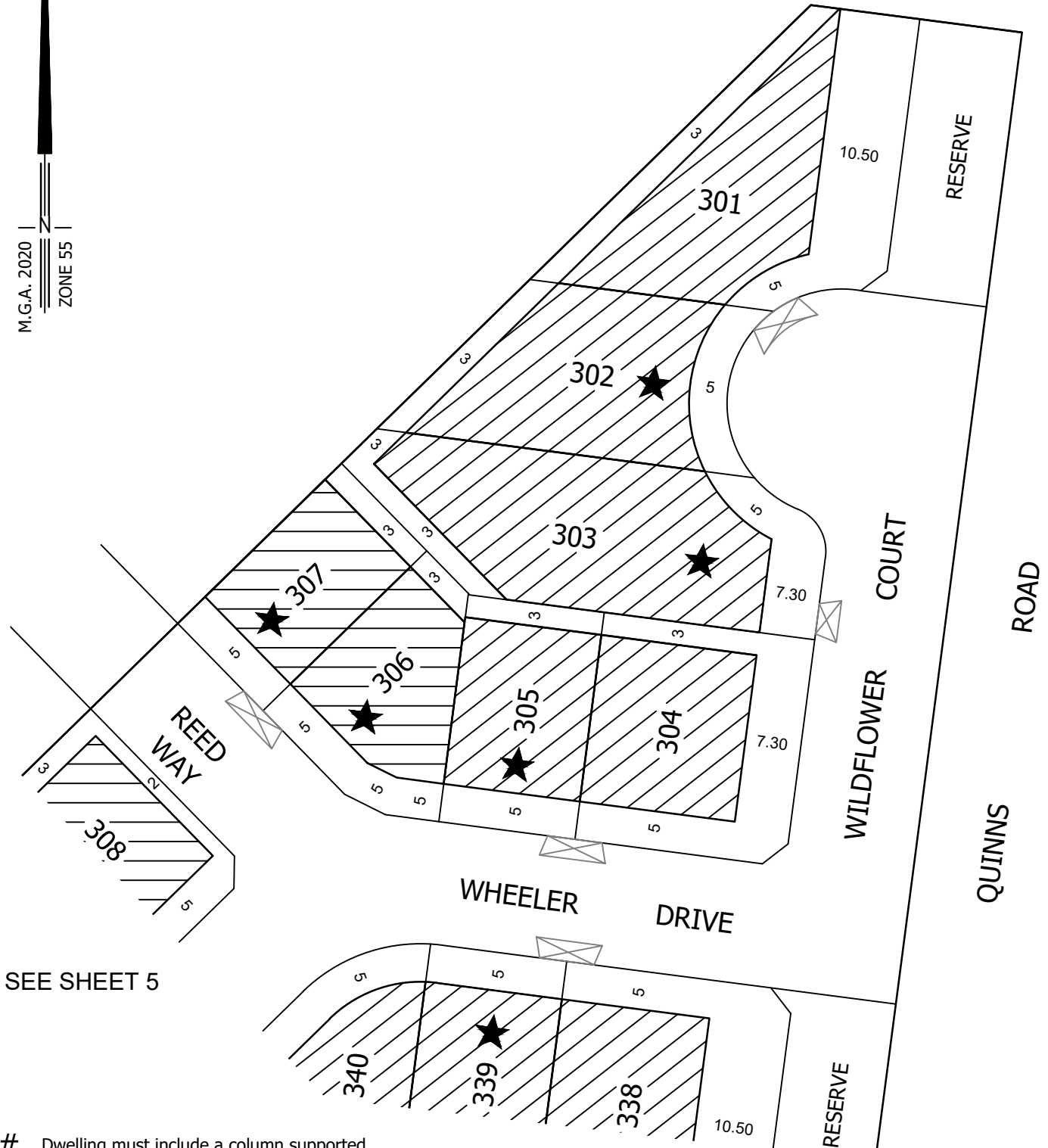


SCHEDULE 1

BROADSTEAD STAGE 3A BUILDING ENVELOPES

M.G.A. 2020 |
ZONE 55 |



SEE SHEET 5

SEE SHEET 2

Dwelling must include a column supported verandah at least 1.8m deep and at least 3.5m wide. Rooms fronting the public realm must have a minimum ground floor ceiling height of 2700mm.

★ Unless nominated on this plan, a build to boundary zone only applies to one of the side of the lot where the crossover exists. A setback of at least 1 metre must be provided for the opposite side boundary.



- DRIVEWAY



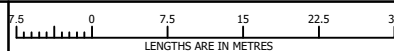
- BUILDING ENVELOPE

- Garages are to be set back a minimum of 5.5m from the primary frontage of the allotment and 0.50m behind the front of the dwelling.



MC MULLEN NOLAN GROUP
Level 1 / 5 Queens Road
Melbourne VIC 3004
Tel: (03) 7002 2200
Fax: (03) 7002 2299
www.mngsurvey.com.au
MNG Ref : 80266be-034b

SCALE
1:750



VERSION B

ORIGINAL SHEET
SIZE: A4

SHEET 1 OF 5

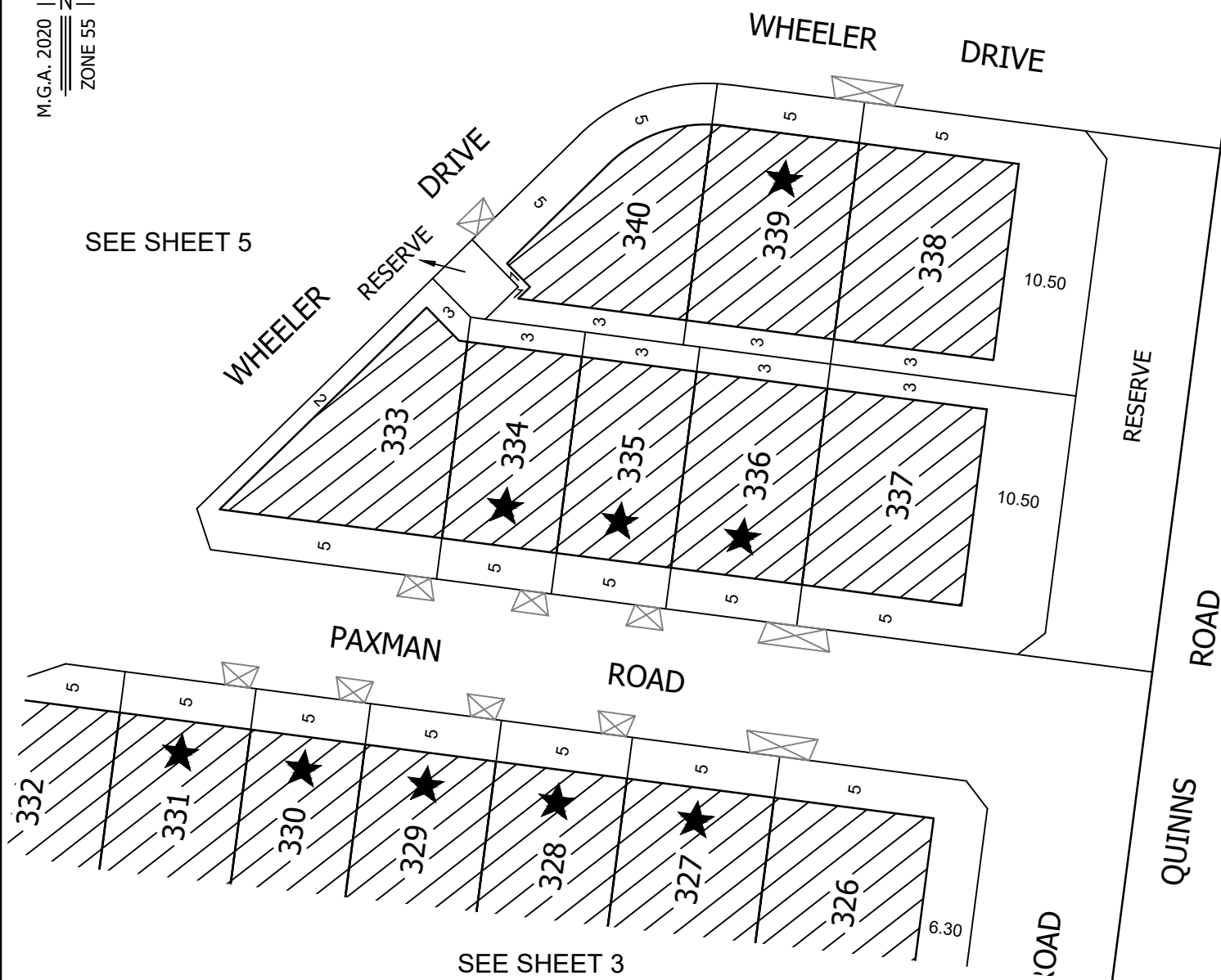
**BROADSTEAD
KILMORE**

SCHEDULE 1

BROADSTEAD STAGE 3A BUILDING ENVELOPES

SEE SHEET 1

SEE SHEET 5



SEE SHEET 3

Dwelling must include a column supported verandah at least 1.8m deep and at least 3.5m wide. Rooms fronting the public realm must have a minimum ground floor ceiling height of 2700mm.

★ Unless nominated on this plan, a build to boundary zone only applies to one of the side of the lot where the crossover exists. A setback of at least 1 metre must be provided for the opposite side boundary.



- DRIVEWAY



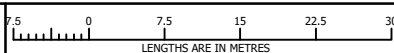
- BUILDING ENVELOPE

- Garages are to be set back a minimum of 5.5m from the primary frontage of the allotment and 0.50m behind the front of the dwelling.



MC MULLEN NOLAN GROUP
Level 1 / 5 Queens Road
Melbourne VIC 3004
Tel: (03) 7002 2200
Fax: (03) 7002 2299
www.mngsurvey.com.au
MNG Ref : 80266be-034b

SCALE
1:750



VERSION B

ORIGINAL SHEET
SIZE: A4

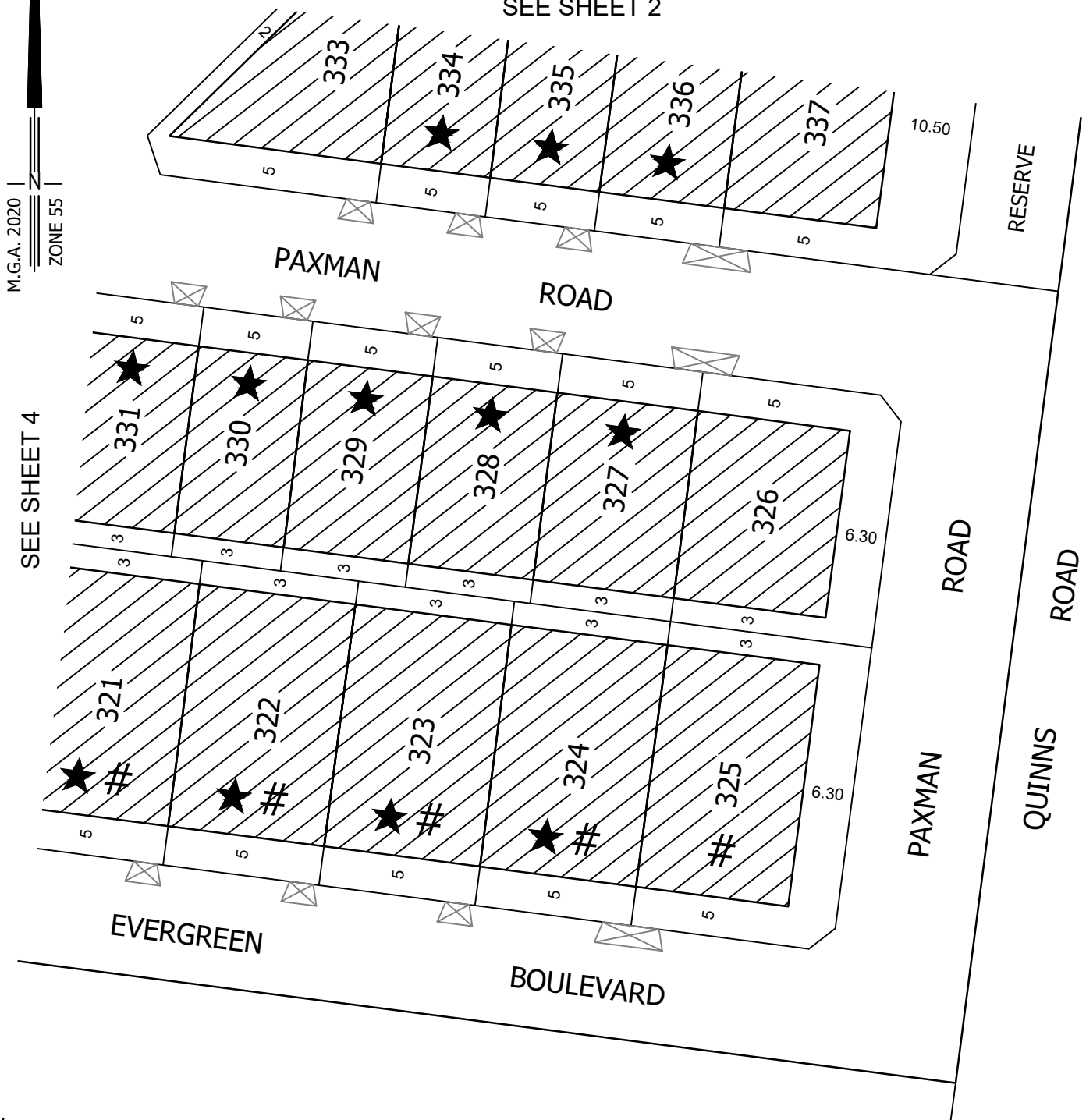
SHEET 2 OF 5

**BROADSTEAD
KILMORE**

SCHEDULE 1

BROADSTEAD STAGE 3A BUILDING ENVELOPES

SEE SHEET 2



Dwelling must include a column supported verandah at least 1.8m deep and at least 3.5m wide. Rooms fronting the public realm must have a minimum ground floor ceiling height of 2700mm.

★ Unless nominated on this plan, a build to boundary zone only applies to one of the side of the lot where the crossover exists. A setback of at least 1 metre must be provided for the opposite side boundary.



- DRIVEWAY



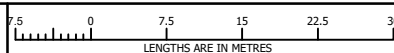
- BUILDING ENVELOPE

- Garages are to be set back a minimum of 5.5m from the primary frontage of the allotment and 0.50m behind the front of the dwelling.



MC MULLEN NOLAN GROUP
Level 1 / 5 Queens Road
Melbourne VIC 3004
Tel: (03) 7002 2200
Fax: (03) 7002 2299
www.mngsurvey.com.au
MNG Ref : 80266be-034b

SCALE
1:750



VERSION B

ORIGINAL SHEET
SIZE: A4

SHEET 3 OF 5

**BROADSTEAD
KILMORE**

SCHEDULE 1

BROADSTEAD STAGE 3A BUILDING ENVELOPES

M.G.A. 2020 |
ZONE 55



Dwelling must include a column supported verandah at least 1.8m deep and at least 3.5m wide. Rooms fronting the public realm must have a minimum ground floor ceiling height of 2700mm.

★ Unless nominated on this plan, a build to boundary zone only applies to one of the side of the lot where the crossover exists. A setback of at least 1 metre must be provided for the opposite side boundary.



- DRIVEWAY



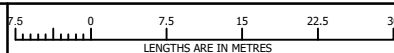
- BUILDING ENVELOPE

- Garages are to be set back a minimum of 5.5m from the primary frontage of the allotment and 0.50m behind the front of the dwelling.



MC MULLEN NOLAN GROUP
Level 1 / 5 Queens Road
Melbourne VIC 3004
Tel: (03) 7002 2200
Fax: (03) 7002 2299
www.mngsurvey.com.au
MNG Ref : 80266be-034b

SCALE
1:750



VERSION B

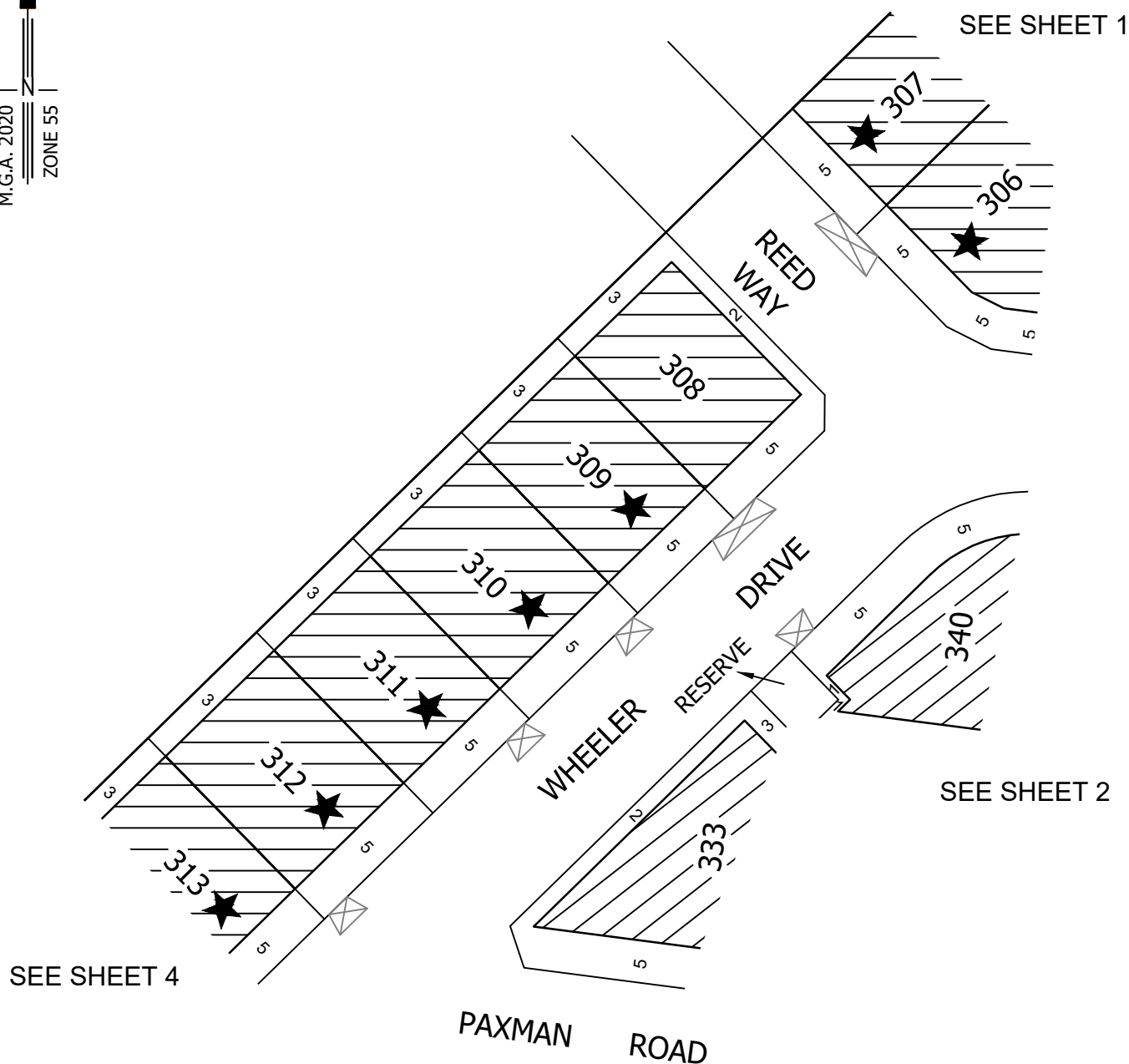
ORIGINAL SHEET
SIZE: A4

SHEET 4 OF 5

**BROADSTEAD
KILMORE**

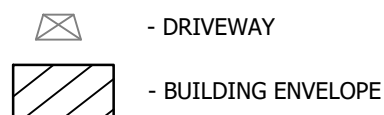
BROADCAST STAGE 3A BUILDING ENVELOPES

M.G.A. 2020 | ZONE 55 |



- #** Dwelling must include a column supported verandah at least 1.8m deep and at least 3.5m wide. Rooms fronting the public realm must have a minimum ground floor ceiling height of 2700mm.

- ★ Unless nominated on this plan, a build to boundary zone only applies to one of the side of the lot where the crossover exists. A setback of at least 1 metre must be provided for the opposite side boundary.



- Garages are to be set back a minimum of 5.5m from the primary frontage of the allotment and 0.50m behind the front of the dwelling.