






# Aspendale 226

**\$646,221**

**LOT 203 Westringia Approach Kilmore 3764 VIC**

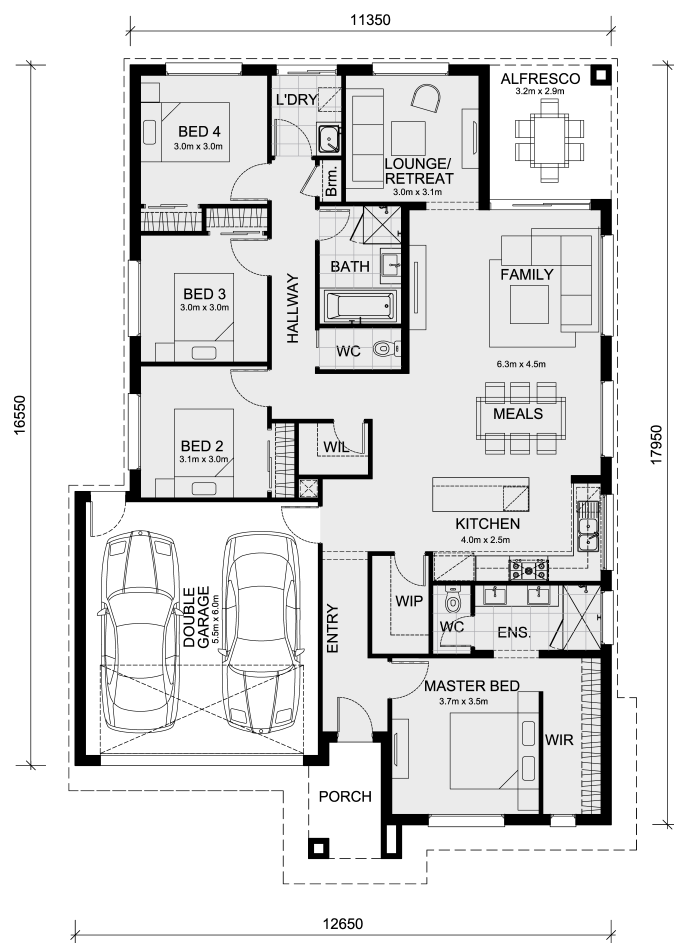
4  2  2 

## Mimosa Homes Proudly Presents

\* The Aspendale 226 House and Land Package! CALL NITIN 0411493699 FOR DETAILS!

\* Mimosa Homes New Added Value Inclusions:

- 50 Year Structural Warranty!
- Inclusive of site costs & connections with H1 class slab as per standard inclusions!
- Quality floor coverings throughout entire home!
- Ceiling height 2740 mm !
- Double Glazed Awning Windows and 3.52 KW Solar Panels!
- LED Downlights to entire home!
- Fibre Optic Provision and Brick Infills Over Windows and doors!
- 40 mm Vitrified Compact Surface benchtop to kitchen and 20 mm to bathroom & ensuite!
- 900mm S/S upright oven and cook top with S/S canopy rangehood!
- Stainless steel Dishwasher and Microwave with trim kit!
- Semi Floating Vanity and 2 m High Showerscreens!
- 7 star energy, Flexible floor plans & so much more! CALL NITIN ON 0411493699 FOR DETAILS!! All plans and facades are indicative only and may change. Mimosa Homes may amend plans, specifications, and prices without notice. Package prices are based on a standard facade, standard inclusions, and suitable land availability, excluding developer/estate requirements. Facade and inclusion images may show non standard items not included in the price. Dimensions are approximate. Landscaping, fencing, decking, planter boxes, driveways, and paths are excluded unless specified.



### Area Details

Land Size: 630sqm  
Building Size: 208sqm

Contact Nitin Gupta  
Phone: 0411 493 699  
nitin@mimosahomes.com.au

[www.mimosahomes.com.au](http://www.mimosahomes.com.au)