

HOUSE & LAND

Sanctuary
RANGE

A NEW PLACE TO CALL HOME



MARCOOLA 209

\$778,750*



4



2



2

TOTAL (sqsq)	22.49
TOTAL (m ²)	208.96
WIDTH (m)	12.85
LENGTH (m)	18.15

LOT 232 WESTRINGIA APPROACH,
KILMORE VIC 3764

LAND: 666m² ESTATE: BROADSTEAD

Features & Inclusions:

20mm Stone Benchtops

Flyscreens

LED Downlights

Local builder/Local trades

Sanctuary Inclusions

Soft Close Cabinetry

Tiled Shower Bases

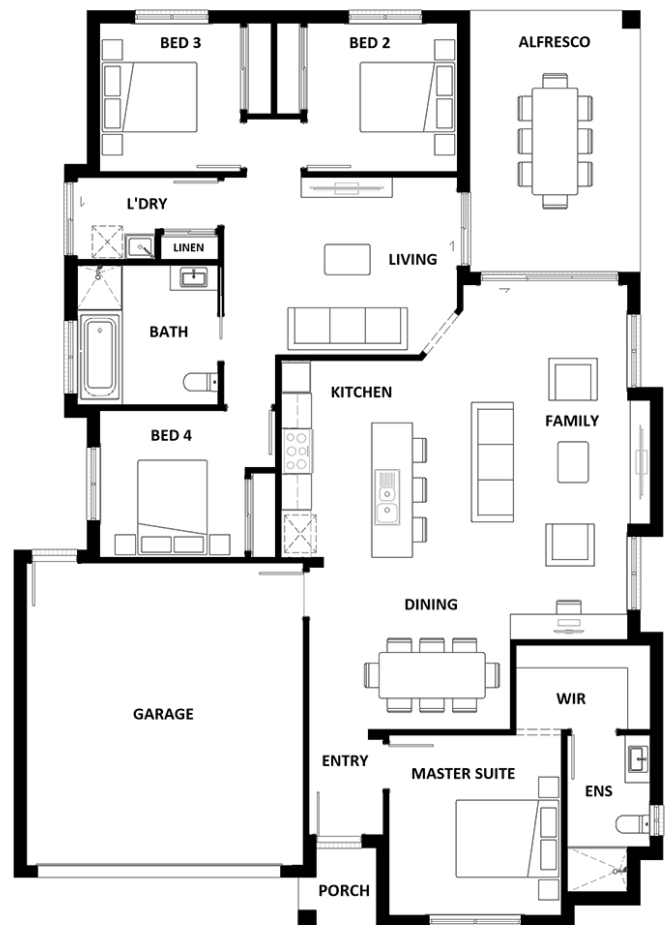
Facade Included

For more information contact:

Danielle Toothill 0400 407 384

sales@hotondowallan.com.au

Builder Licence: DB-U 66766



*Dimensions, photographs, floor plans and facade images are approximate and for illustrative purposes only. They are not drawn to scale. The dimensions provided of "width" and "length" are the actual dimensions of the completed house including alfresco areas (where applicable). It is the home owner's responsibility to ensure that all applicable council regulations and estate requirements are met. Subject to land availability, pricing and site costs unless advertised as a 'fixed price package'. Driveway size based on builder's preferred siting. Check with your local builder for builder's standard range and inclusions. Photographs may include optional features or items that are not supplied by Hotondo Homes. Hotondo Homes reserves the right to change plans, specifications, materials and suppliers without notice. For more information visit your local builder or hotondo.com.au.