



FOR ILLUSTRATION PURPOSES ONLY

# ARIA 31

Hampton Facade



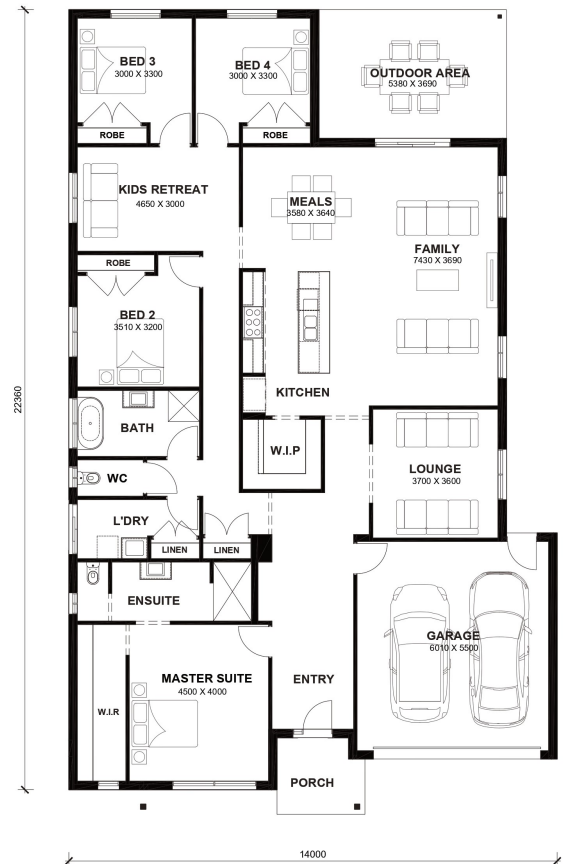
# \$703,400

Lot 203 Westringia Approach  
**Kilmore (Broadstead Estate)**

<b>Lot Size:</b>	630m <sup>2</sup>	<b>House Size:</b>	31.34sq
<b>Lot Price:</b>	\$360,000	<b>House Price:</b>	\$343,400

### PACKAGE INCLUSIONS :

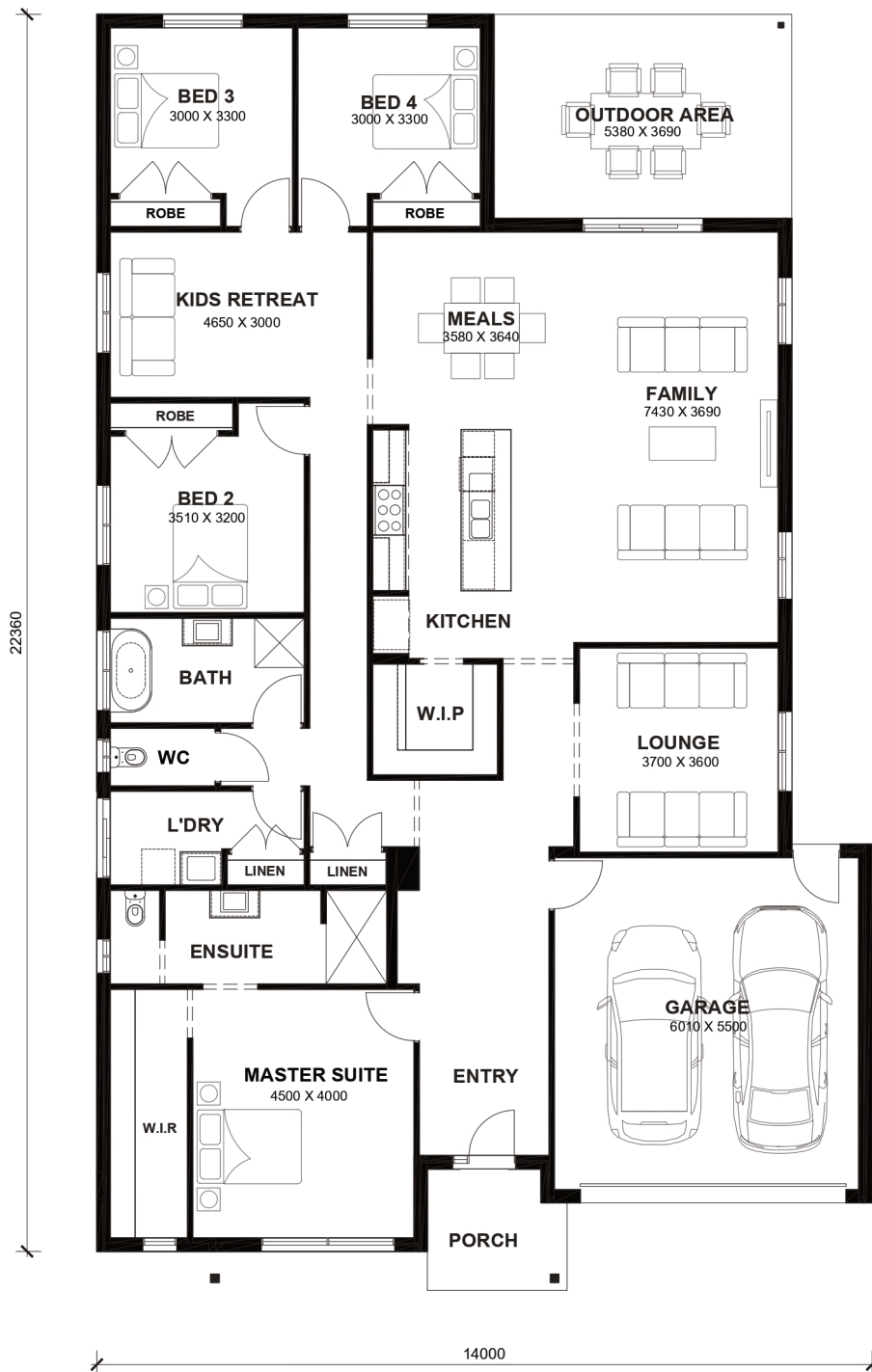
- Led Downlights throughout the House
- 2.2kw Solar System
- Double Glazed Windows (Design Specific).
- Ducted Heating.
- Flyscreens To All Openable Windows.
- Glazed Porcelain Tiles To All Wet Areas (Including Showerbase).
- 215L Heat Pump Hot water Service.



# Aria 31



LOT WIDTH 16m<sup>+</sup> LOT DEPTH 32m<sup>+</sup>



## TOTAL AREAS

FAMILY	7430mm x 3690mm	BED 4	3000mm x 3300mm	TOTAL	291.11m <sup>2</sup>	31.34sq
MEALS	3580mm x 3640mm	LOUNGE	3700mm x 3600mm			
MASTER SUITE	4500mm x 4000mm	KIDS RETREAT	4650mm x 3000mm	EXTERIOR LENGTH		22,360
BED 2	3510mm x 3200mm	OUTDOOR AREA	5380mm x 3690mm	EXTERIOR WIDTH		14,000
BED 3	3000mm x 3300mm	GARAGE	6100mm x 5500mm			

House size on brochure is based on the Avalon facade. Size may vary dependant on facade. Please refer to working drawings for complete dimensions.