

HOUSE & LAND

Sanctuary
RANGE

\$10,000 OUTDOOR LIVING BONUS



COOLOOLA 208

\$755,130*



4



2



2

TOTAL (sqsq)	22.36
TOTAL (m ²)	207.69
WIDTH (m)	14.26
LENGTH (m)	18.39

**LOT 237 WESTRINGIA APPROACH,
KILMORE VIC 3764**

LAND: 740m² ESTATE: BROADSTEAD

Features & Inclusions:

LED Downlights

Tiled Shower Bases

Soft Close Cabinetry

Facade Included

Open-plan kitchen, living and dining

Sanctuary Inclusions

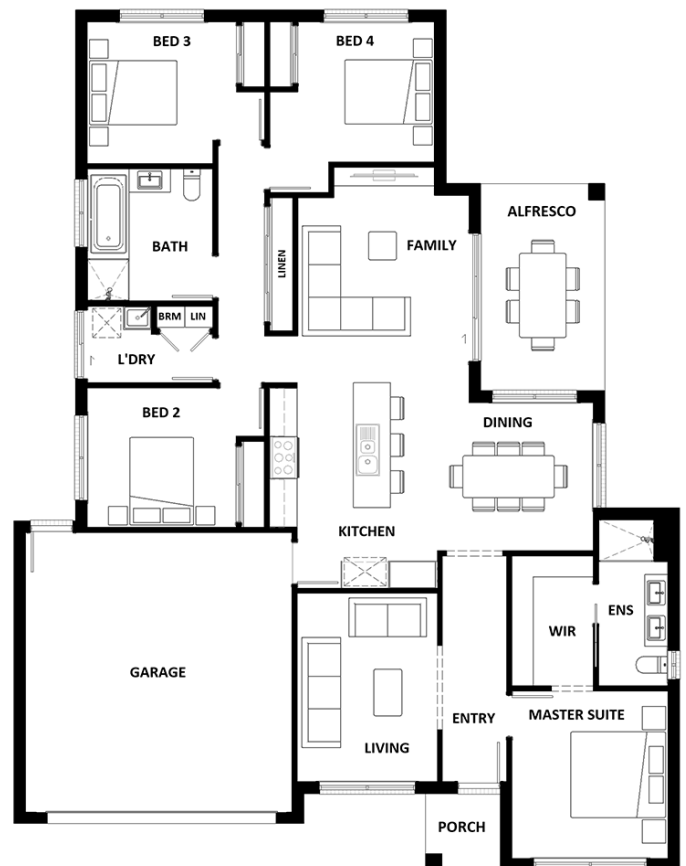
Local builder/Local trades

For more information contact:

Danielle Toothill 0400 407 384

sales@hotondowallan.com.au

Builder Licence: DB-U 66766



*Dimensions, photographs, floor plans and facade images are approximate and for illustrative purposes only. They are not drawn to scale. The dimensions provided of "width" and "length" are the actual dimensions of the completed house including alfresco areas (where applicable). It is the home owner's responsibility to ensure that all applicable council regulations and estate requirements are met. Subject to land availability, pricing and site costs unless advertised as a 'fixed price package'. Driveway size based on builder's preferred siting. Check with your local builder for builder's standard range and inclusions. Photographs may include optional features or items that are not supplied by Hotondo Homes. Hotondo Homes reserves the right to change plans, specifications, materials and suppliers without notice. For more information visit your local builder or hotondo.com.au.

**Hotondo
Homes**