

# HOUSE & LAND

Sanctuary  
RANGE

\$10,000 OUTDOOR LIVING BONUS



MARCOOLA 209

**\$745,400\***



4



2



2

TOTAL (sqsq)	22.49
TOTAL (m <sup>2</sup> )	208.96
WIDTH (m)	12.85
LENGTH (m)	18.15

**LOT 232 WESTRINGIA APPROACH,  
KILMORE VIC 3764**

LAND: 666m<sup>2</sup> ESTATE: BROADSTEAD

### Features & Inclusions:

LED Downlights

Tiled Shower Bases

Facade Included

Sanctuary Inclusions

Open-plan kitchen, living and dining

Soft Close Cabinetry

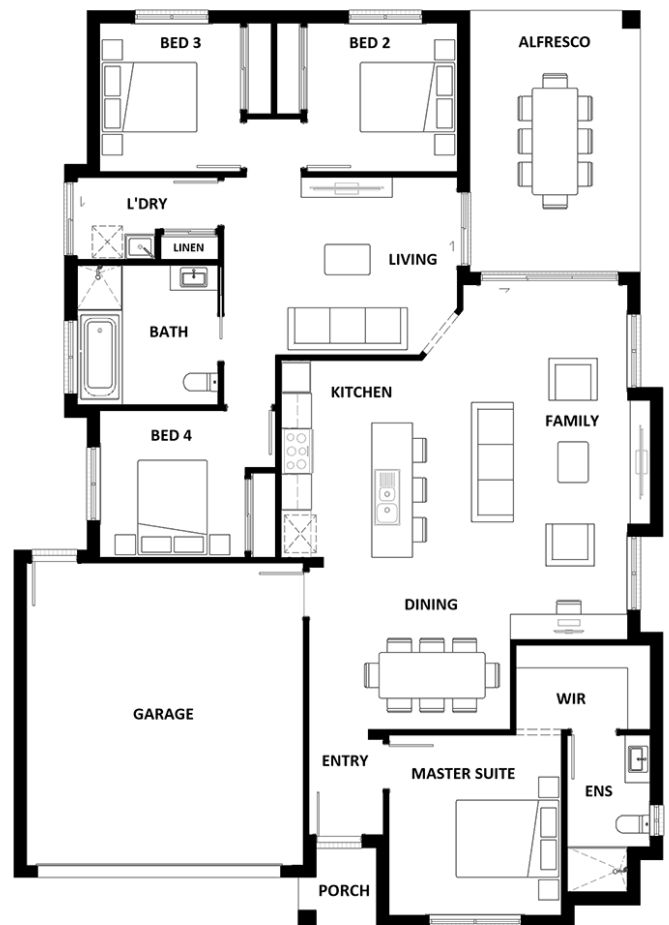
Local builder/Local trades

For more information contact:

**Danielle Toothill 0400 407 384**

**sales@hotondowallan.com.au**

Builder Licence: DB-U 66766



\*Dimensions, photographs, floor plans and facade images are approximate and for illustrative purposes only. They are not drawn to scale. The dimensions provided of "width" and "length" are the actual dimensions of the completed house including alfresco areas (where applicable). It is the home owner's responsibility to ensure that all applicable council regulations and estate requirements are met. Subject to land availability, pricing and site costs unless advertised as a 'fixed price package'. Driveway size based on builder's preferred siting. Check with your local builder for builder's standard range and inclusions. Photographs may include optional features or items that are not supplied by Hotondo Homes. Hotondo Homes reserves the right to change plans, specifications, materials and suppliers without notice. For more information visit your local builder or hotondo.com.au.

**Hotondo  
Homes**