



HOUSE & LAND

\$754,836*

BROADSTEAD – KILMORE

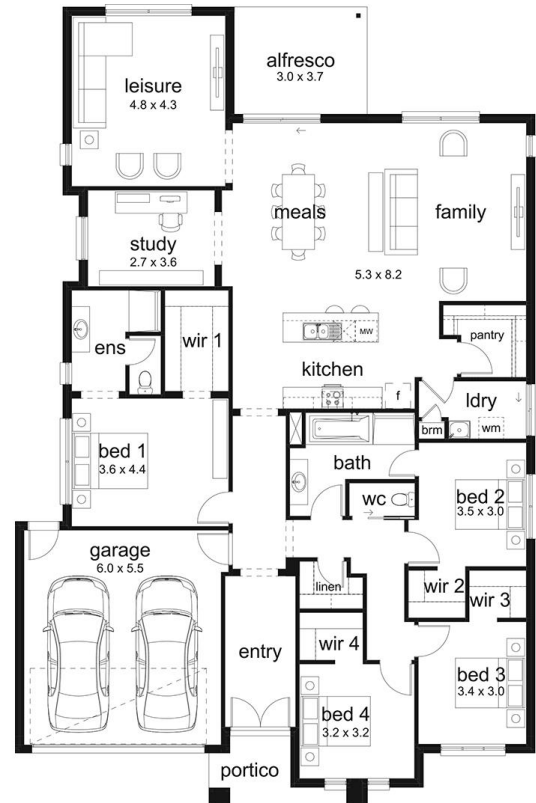
Lot 235 Westringa Approach
Kilmore VIC 3764

4 2 2 2 1 1

Avarnti 30 Haven Façade
(Aspirations Series 3)

Home size: 29.83sq Land size: 666.00m²

- ✓ 2KW PV Solar Panels System
- ✓ NCC 2022 Compliant
- ✓ BAL 12.5 inclusions
- ✓ Site Costs Allowance
- ✓ NBN/Opticomm/Redtrain/Multinet/CNT Corp. connection
- ✓ 2580mm ceiling height to ground floor
- ✓ Remote control to garage door
- ✓ Flyscreens
- ✓ 900mm Stainless Steel Appliances
- ✓ Gas ducted heating
- ✓ Evaporative cooling
- ✓ Floor Coverings
- ✓ Integrated dishwasher to match kitchen cabinetry
- ✓ Current Promotion
- ✓ 35m² of colour-through concrete to driveway and portico
- ✓ Feature Render
- ✓ 40mm Caesarstone benchtops to kitchen
- ✓ 20mm Caesarstone benchtops to bathroom and ensuite
- ✓ Laminate laundry cabinet with 45lt stainless steel trough
- ✓ 20 downlights



**BROADSTEAD
KILMORE**

Go to dennisfamily.com.au or call
1800 DENNIS for more information.

Kurt Nilsson 0418 667 395

Reference HL0048351