



HOUSE & LAND

\$841,255*

BROADSTEAD – KILMORE

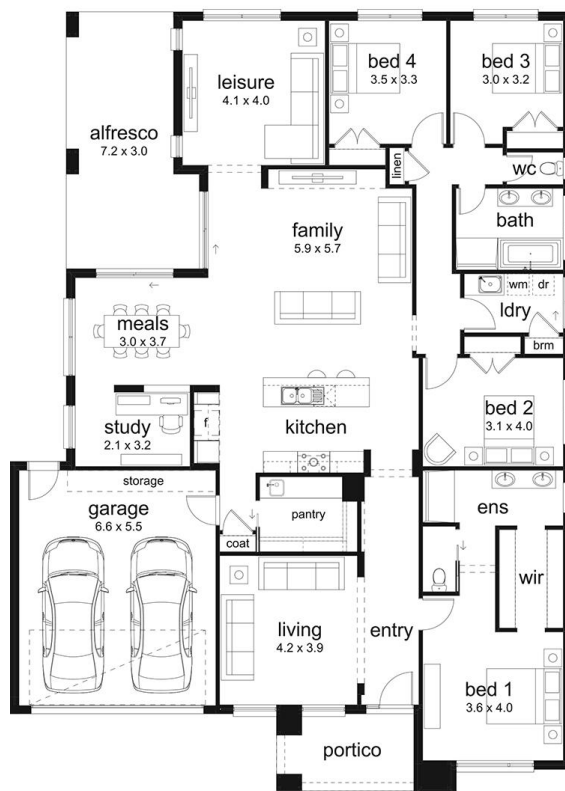
Lot 239 Westringa Approach
Kilmore VIC 3764

4 2 2 3 1 1

Charlton 33 Hamptons Façade
(Inspirations Series 5)

Home size: 32.88sq Land size: 740.00m²

- ✓ 2KW PV Solar Panels System
- ✓ 7 Star Energy Rating
- ✓ BAL 12.5 inclusions
- ✓ Site Costs Allowance
- ✓ NBN/Opticomm/Redtrain/Multinet/CNT Corp. connection
- ✓ 2580mm ceiling height to ground floor
- ✓ Remote control to garage door
- ✓ Flyscreens
- ✓ 900mm Stainless Steel Appliances
- ✓ Gas ducted heating
- ✓ Evaporative cooling
- ✓ Floor Coverings
- ✓ 35m² of colour-through concrete to driveway and portico
- ✓ Feature Render
- ✓ Exclusive Dishwasher Inclusion
- ✓ 40mm Caesarstone benchtops to kitchen
- ✓ Undermount sink
- ✓ 20mm Caesarstone benchtops to bathroom and ensuite
- ✓ Alfresco included
- ✓ Overhead cupboards to laundry (up to 900mm)
- ✓ 20 downlights



BROADSTEAD KILMORE Go to dennisfamily.com.au or call **1800 DENNIS** for more information.

Kurt Nilsson 0418 667 395

Reference HL0047883