



**dennis
family
homes**

a family building
homes for families™



HOUSE & LAND

\$762,466*

BROADSTEAD – KILMORE

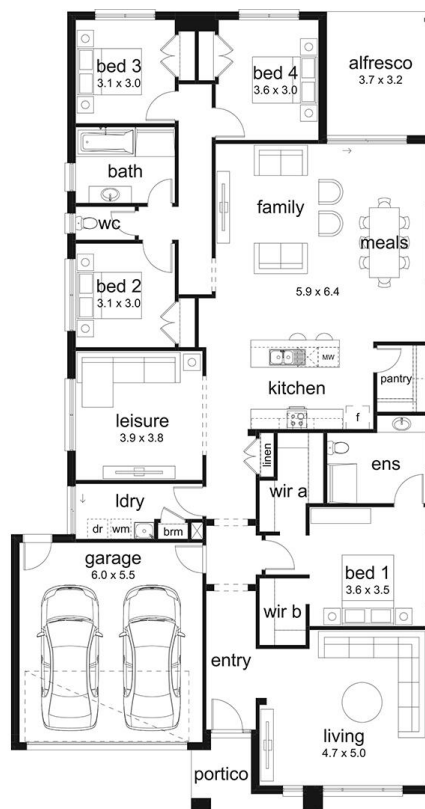
Lot 238 Westringa Approach
Kilmore VIC 3764

🚗 4 🏠 2 🚗 2 🚗 3 🏠 1

Ekati 29 Haven Façade
(Aspirations Series 3)

Home size: 28.82sq Land size: 740.00m²

- ✓ 2KW PV Solar Panels System
- ✓ NCC 2022 Compliant
- ✓ 7 Star Energy Rating
- ✓ BAL 12.5 inclusions
- ✓ Site Costs Allowance
- ✓ NBN/Opticomm/Redtrain/Multinet/CNT Corp. connection
- ✓ 2580mm ceiling height to ground floor
- ✓ Remote control to garage door
- ✓ Flyscreens
- ✓ 900mm Stainless Steel Appliances
- ✓ Gas ducted heating
- ✓ Evaporative cooling
- ✓ Floor Coverings
- ✓ 35m² of colour-through concrete to driveway and portico
- ✓ Feature Render
- ✓ Exclusive Dishwasher Inclusion
- ✓ Undermount sink
- ✓ 20mm Caesarstone benchtops to bathroom and ensuite
- ✓ Alfresco included
- ✓ Overhead cupboards to laundry (up to 900mm)
- ✓ 20 downlights



**BROADSTEAD
KILMORE**

Go to dennisfamily.com.au or call
1800 DENNIS for more information.

Kurt Nilsson 0418 667 395

Reference HL0047884

*Subject to land and build contracts for specified lot, available until sold. 1. Images not to scale and may differ from final built forms. 2. Landscaping, driveway, retaining walls, paving, decking, fencing, decorator items and furnishings not included. 3. Unless stated, site costs are not fixed, package price may increase depending on: rock removal and services connection costs, retaining walls, tree root mitigation, developer requirements, BAL zoning and other statutory requirements. 4. "Fixed site costs" packages include rock removal and services connection only, exclude retaining walls and tree root mitigation. 5. Price based on façade shown, excludes stamp duty, legal and transaction costs eg FIRE, finance fees. 6. Customers required to enter into a separate land contract with the land developer. 7. Prospective buyers should make and rely on their own enquiries and seek independent legal and financial advice. 8. Package not available in conjunction with any other promotions. 9. Additional options available, additional charges may apply. 10. Alternative facade options available additional charges may apply. ©2022, Dennis Family Homes Pty Ltd ACN 056254249 is a registered building practitioner CDB-U 49195 (Vic) and 173511C (NSW). ©2019, Dennis Family Homes Pty Ltd ACN 056254249 is a registered building practitioner CDB-U 49195 (Vic) and 173511C (NSW).