



# HOUSE & LAND

# \$750,666\*

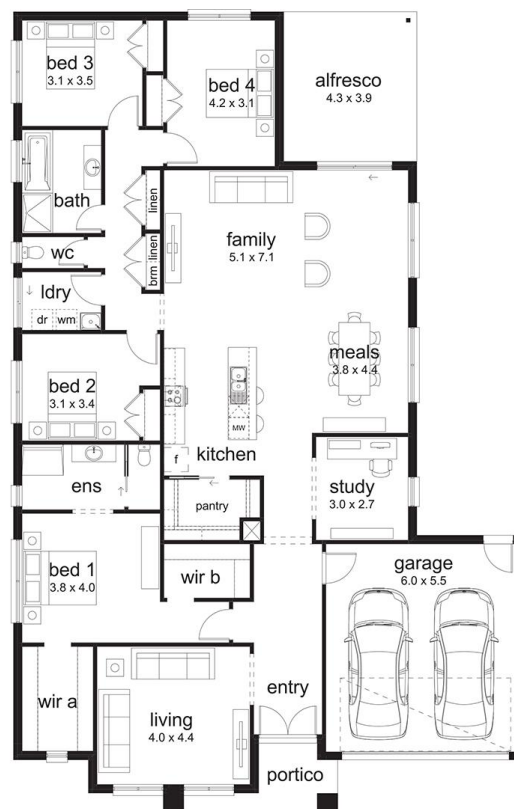
**BROADSTEAD – KILMORE**

Lot 203 Westringa Approach  
Kilmore VIC 3764

**Cobaine 30 Haven Façade**  
(Aspirations Series 3)

Home size: 30.28sq Land size: 630.00m<sup>2</sup>

- ✓ 2KW PV Solar Panels System
- ✓ NCC 2022 Compliant
- ✓ 7 Star Energy Rating
- ✓ BAL 12.5 inclusions
- ✓ Site Costs Allowance
- ✓ NBN/Opticomm/Redtrain/Multinet/CNT Corp. connection
- ✓ 2580mm ceiling height to ground floor
- ✓ Remote control to garage door
- ✓ Flyscreens
- ✓ 900mm Stainless Steel Appliances
- ✓ Gas ducted heating
- ✓ Evaporative cooling
- ✓ Floor Coverings
- ✓ 20mm Caesarstone benchtops to kitchen
- ✓ 35m<sup>2</sup> of colour-through concrete to driveway and portico
- ✓ Feature Render
- ✓ Exclusive Dishwasher Inclusion
- ✓ Undermount sink
- ✓ 20mm Caesarstone benchtops to bathroom and ensuite
- ✓ Alfresco included
- ✓ Overhead cupboards to laundry (up to 900mm)
- ✓ 20 downlights



**BROADSTEAD  
KILMORE**

Go to [dennisfamily.com.au](https://dennisfamily.com.au) or call  
**1800 DENNIS** for more information.

Kurt Nilsson 0418 667 395

Reference HL0047882